



Θ

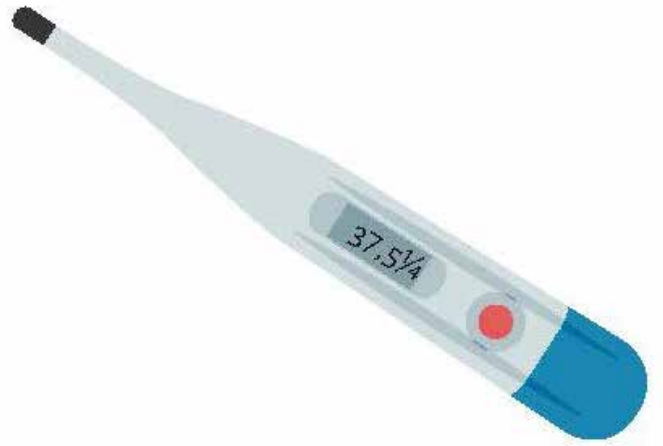
Θ





θα





θε



θέλω



Θι



Θ ο



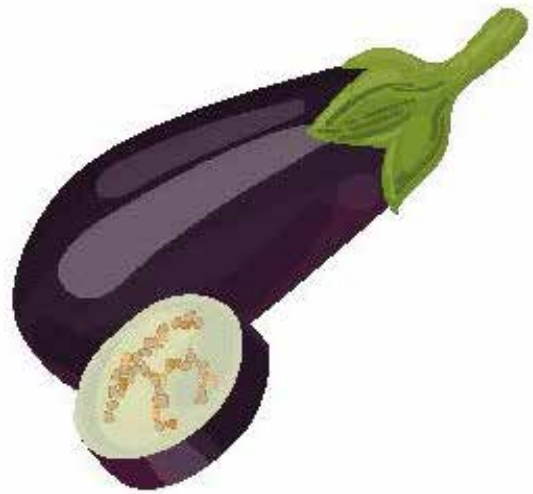
М м





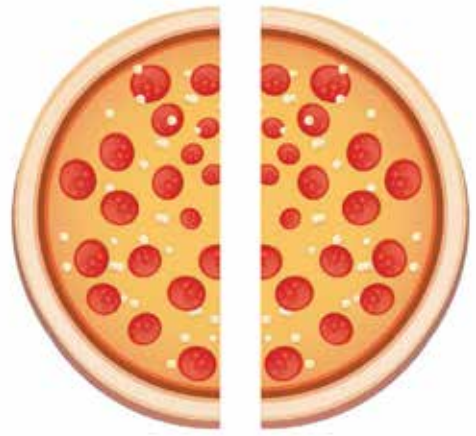
μα



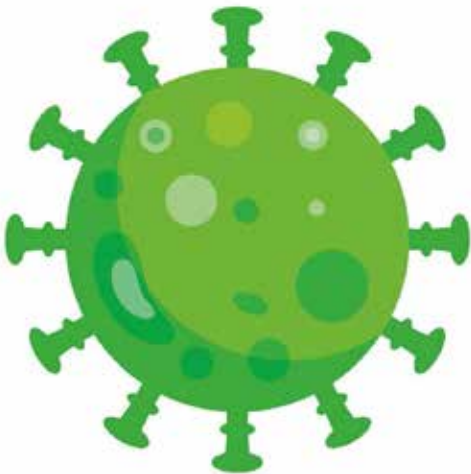


με





μ





μο





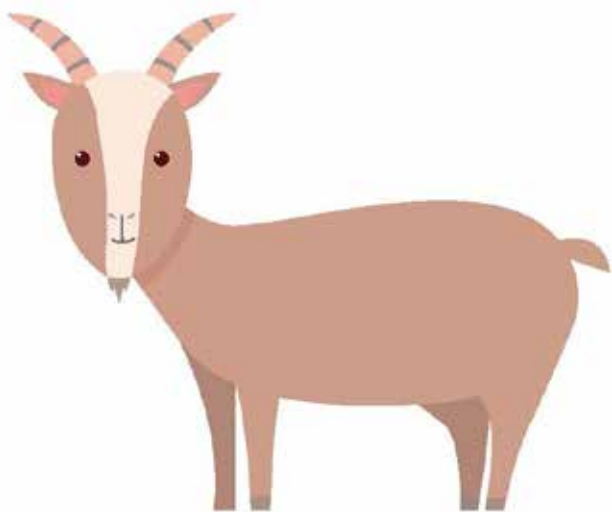
H h





Г

г





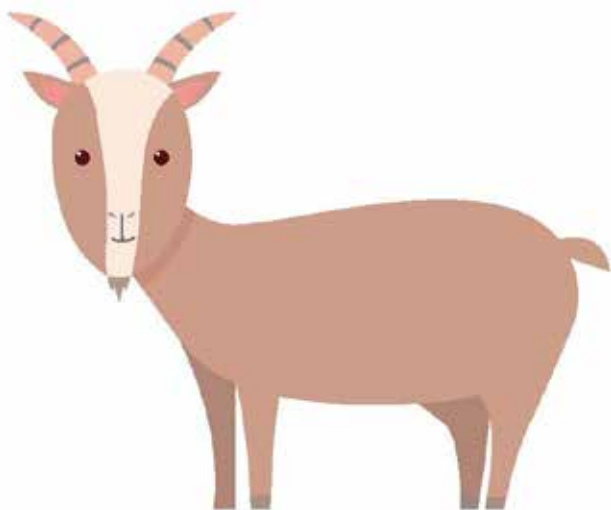
ya





γε





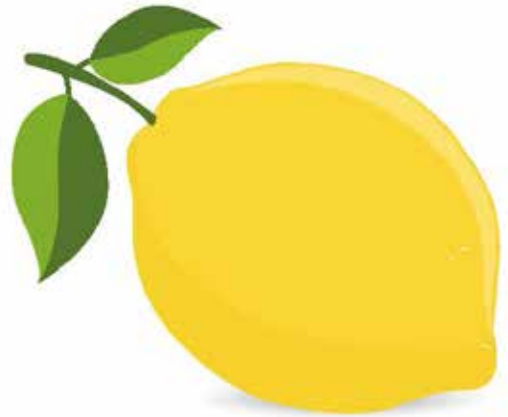
yu





yo





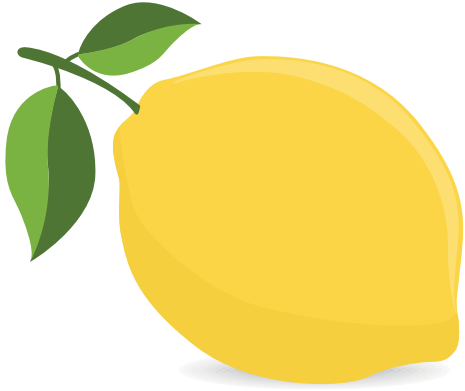
Λ λ





λα



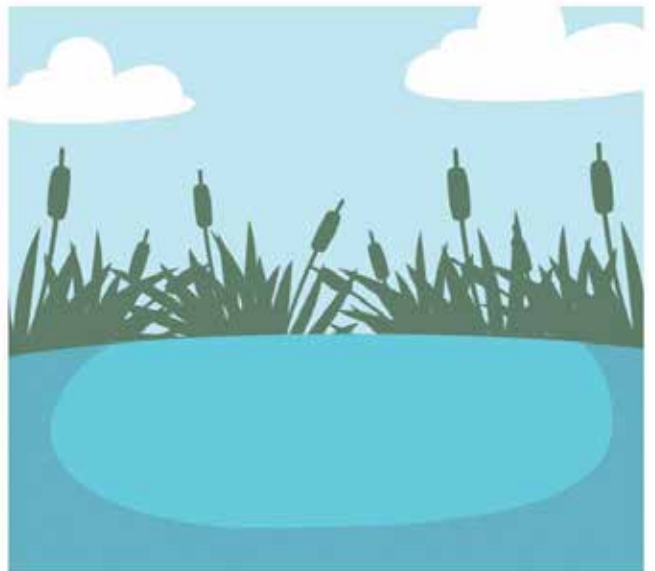


λε





ли





λο





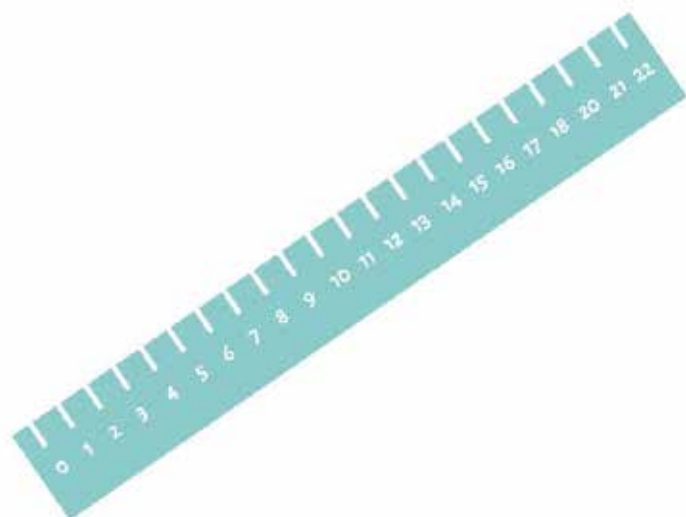
X

x



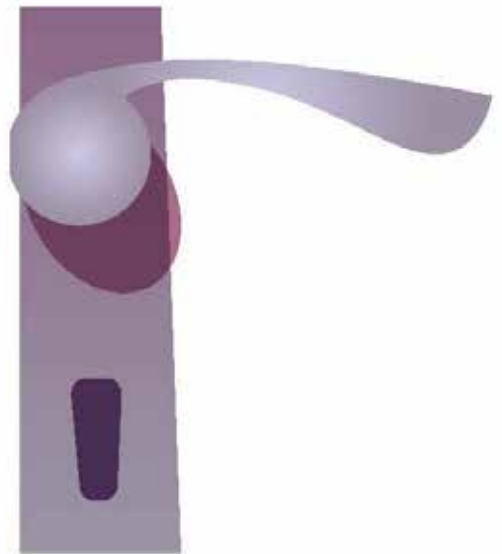
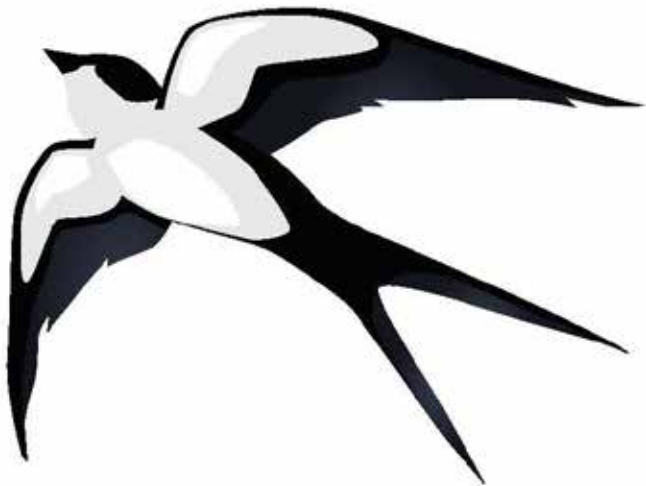


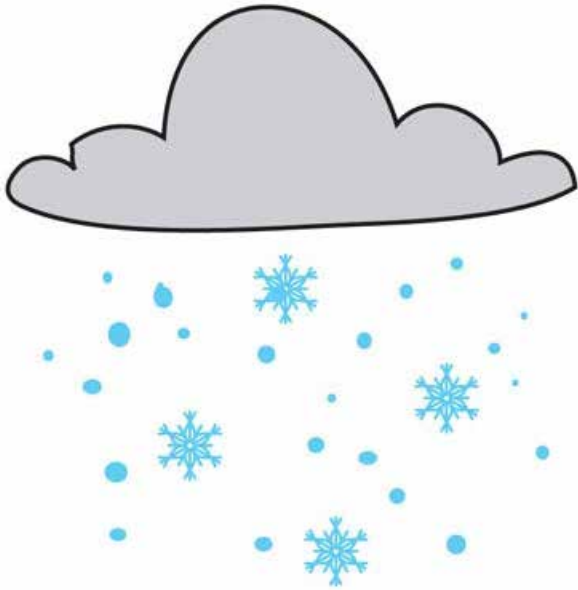
χα





χε





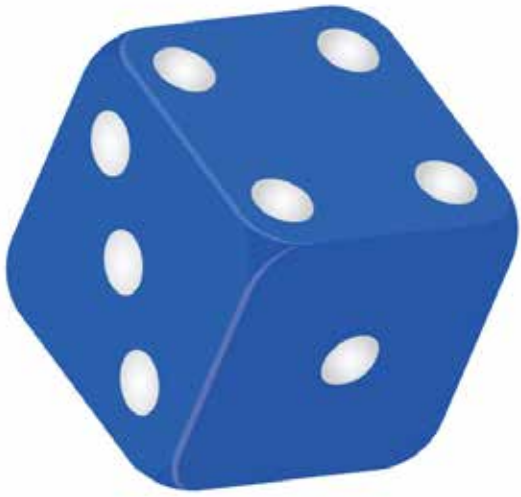
XI





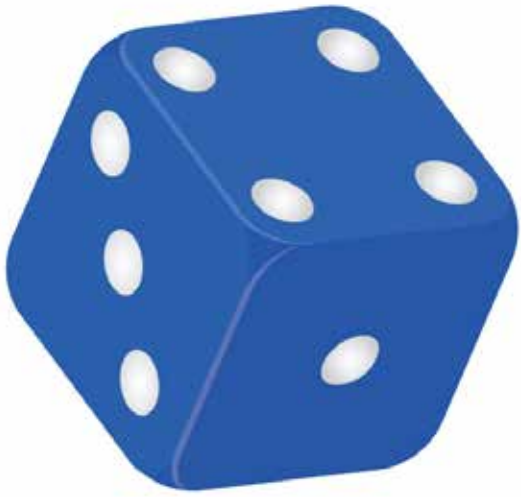
χο





Z z





ζα





ㄹ
ㅔ





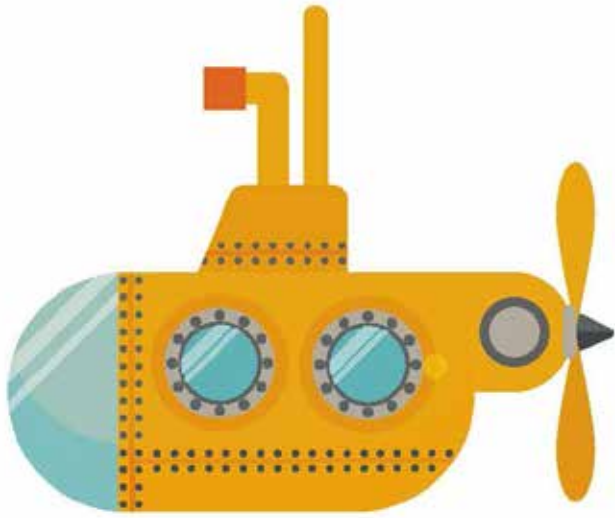
ՀԱ





Zo





Yv

